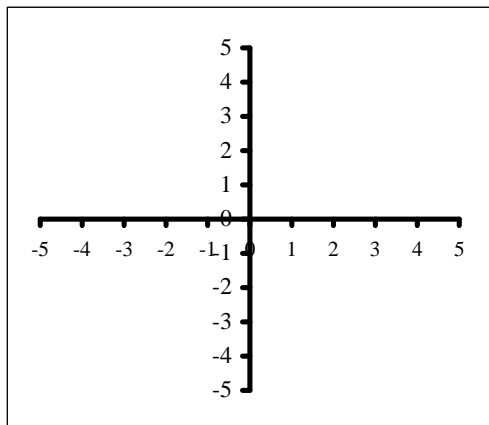


4.4. Verschiebung von Potenzfunktionen

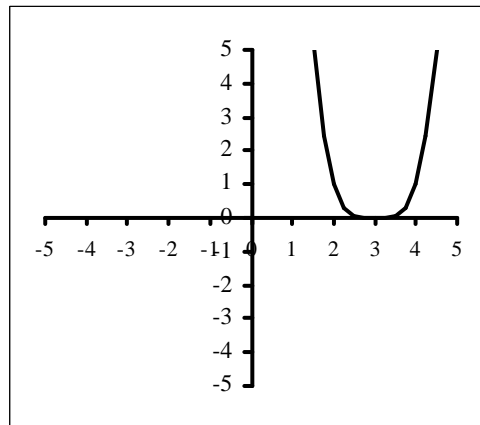
Trage die fehlenden Skizzen und Funktionsgleichungen ein. Kontrolliere das Ergebnis anhand der Achsenschnittpunkte.

Aufgabe 1



$$f(x) = (x + 2)^{-1} + 1$$

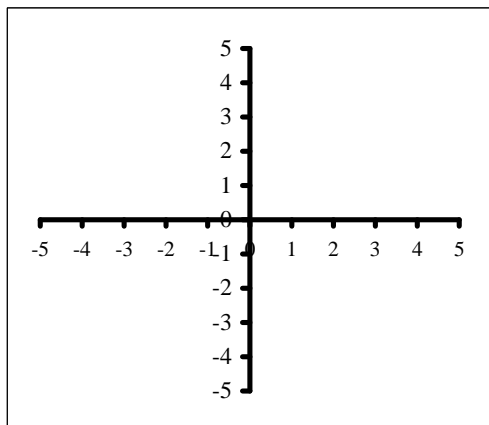
=



$$f(x) =$$

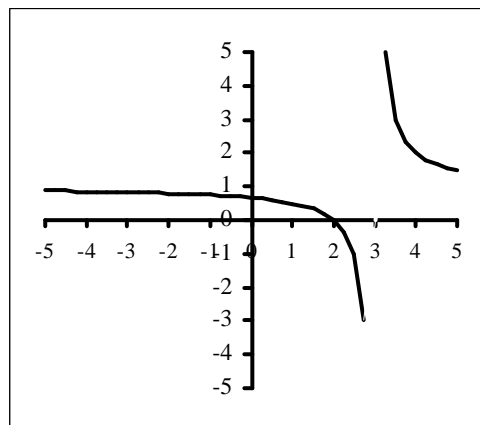
=

Aufgabe 2



$$f(x) = -(x + 2)^4 - 1$$

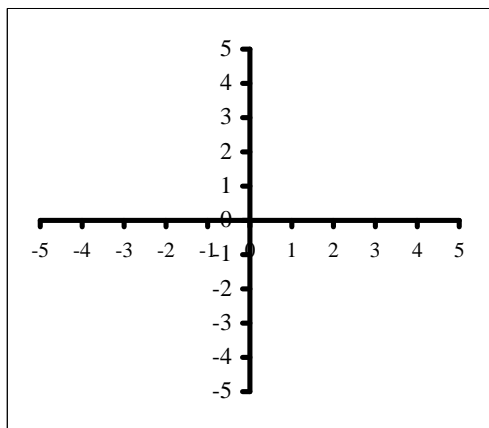
=



$$f(x) =$$

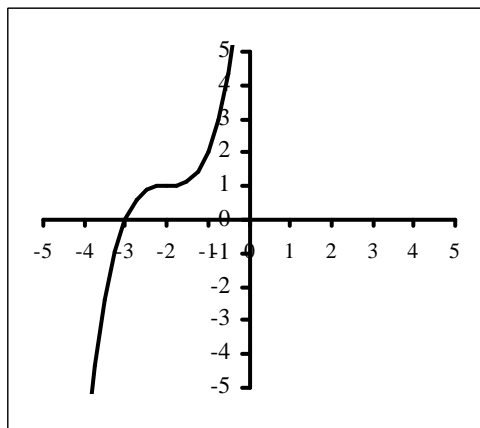
=

Aufgabe 3



$$f(x) = (x - 2)^{-2}$$

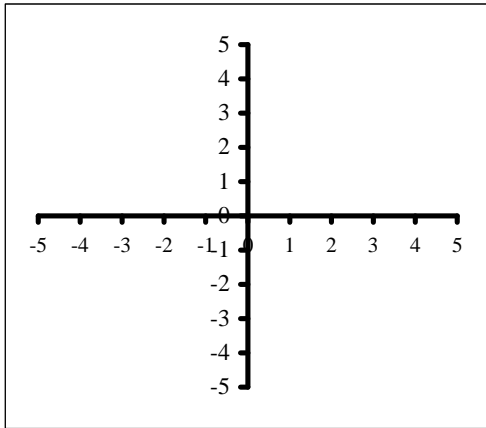
=



$$f(x) =$$

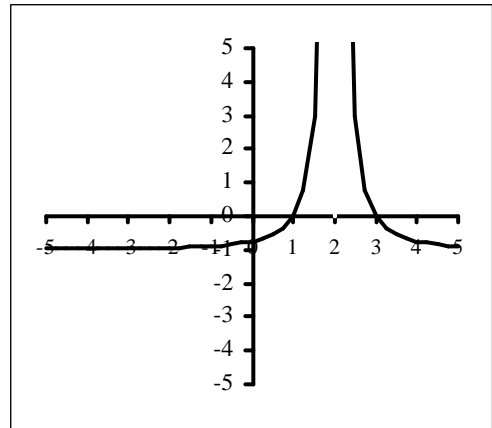
=

Aufgabe 4



$$f(x) = (x - 2)^2 + 1$$

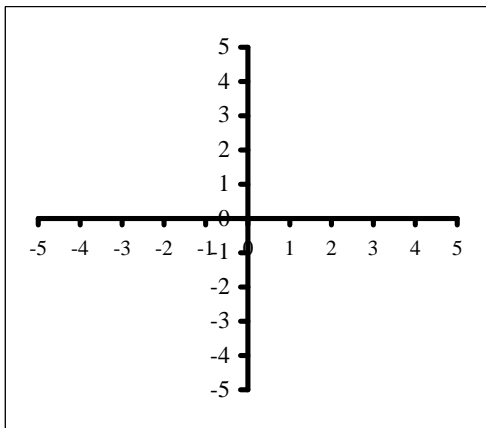
=



$$f(x) =$$

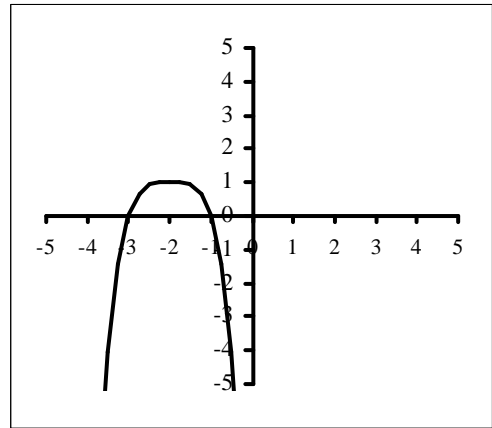
=

Aufgabe 5



$$f(x) = (x - 1)^{-1} + 1$$

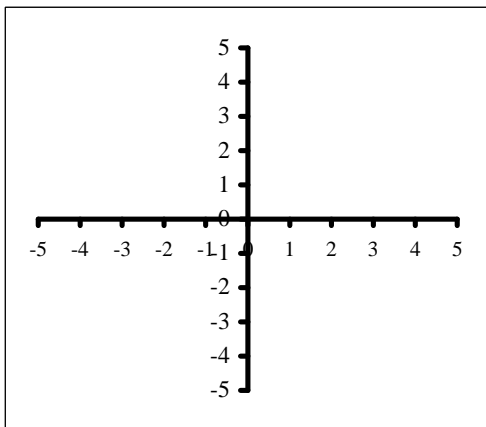
=



$$f(x) =$$

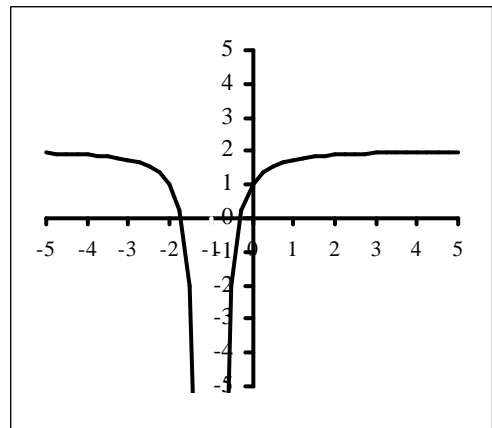
=

Aufgabe 6



$$f(x) = (x - 3)^3 + 1$$

=



$$f(x) =$$

=